

JUNE 2022



INTU 4X4

**4x4 accessories & camping equipment**

1

## Our story

Intu 4x4 was born out of passion for adventures off the beaten tracks and of 25+ years of camping & driving experience in remote areas on the African continent.

In the times we are living, moving back into nature, away from the crowds, in self-sustained well-equipped cars has become more than ever something to aspire to...

At Intu 4x4 we will take the time to discuss your ideas and wishes and together we will look at which equipment would fit you and/or your car the best.

Don't hesitate to get in touch!

Vincent Boulanger



<a href="#">Roof top tents</a>	- Page 04 / 05 /06
<a href="#">Awnings and shower cubicles</a>	- Page 07 / 08
<a href="#">Roof top tents accessories and ladders</a>	- Page 09
<a href="#">Roof Rack</a>	- Page 10
<a href="#">Roof Rack accessories</a>	- Page 11 /12 / 13
<a href="#">Vehicle protection</a>	- Page 14
<a href="#">Bull bars</a>	- Page 15
<a href="#">Rear bumper and wheel carrier</a>	- Page 16
<a href="#">Storage solutions</a>	- Page 17 / 18
<a href="#">Sliders and gullwings</a>	- Page 19
<a href="#">Boxes and Lashing</a>	- Page 20
<a href="#">Storage accessories</a>	- Page 21
<a href="#">Refrigeration</a>	- Page 22 / 23
<a href="#">Fridge sliders</a>	- Page 24
<a href="#">Auxiliary Power sources</a>	- Page 25
<a href="#">Solar Panels</a>	- Page 26
<a href="#">Batteries and battery management</a>	- Page 27
<a href="#">Batteries accessories</a>	- Pages 28
<a href="#">Recovery gear</a>	- Page 29 / 30 / 31
<a href="#">Suspension</a>	- Page 32
<a href="#">Brakes / clutch upgrade</a>	- Page 33
<a href="#">Lighting</a>	- Page 34
<a href="#">Canopy</a>	- Page 35
<a href="#">Roof conversion</a>	- Page 36
<a href="#">Camping Equipment</a>	- Page 37 / 38 / 39 / 40 / 41
<a href="#">Camp lightning</a>	- Page 42 / 43
<a href="#">Water tanks and containers</a>	- Page 44
<a href="#">Adventures</a>	- Page 45

# Roof top tents

4

We have selected the best roof tents on the market and will be able to advise you according to your needs.

## Alu-Cab

The new **Alu-Cab Generation 3.1 Expedition Tent** has to be one of the best over landing tents on the market. Its sleeker, more aerodynamic, giving the tent not only a better look but less wind drag. It has a strong aluminum outer casing and base which gives it far less chance of possible cracking, and can be utilized to mount awnings, jacks, and other off-road equipment.

<https://youtu.be/-EP2vY-5mGI>

The roof tent **Alucab Gen 3.1** is @ 433.100 Ksh fitted



The **iKamper roof tent** is the Rolls Royce of the roof tents. Also, a popup hard-shell, take 30 sec to set up and can fit **4 people**.

The perfect roof tent for travelers & explorers – whether you want to spend a nice weekend with your family or experience adventure in an off-road vehicle and explore the remotest places of our world. The iKamper Skycamp Roof Tent is our favorite solution if we spontaneously want to leave behind us the hectic pace of everyday life by car.

<https://www.youtube.com/watch?v=mnwaewKqI64>

The **iKamper 3.0** is from 605.870 Ksh fitted.



The 2-Person version of the Best-selling **Skycamp The Skycamp Mini** offers the same quick setup (1 minute) as the Skycamp, but in a shorter expandable hardshell: perfect for the bed or cab of your truck, for a smaller vehicle, or for saving space on your roof.

<https://youtu.be/tJV6o288SgE>

The **iKamper Mini** is from 514.850 Ksh fitted.



Prices are subject to change and VAT may apply.

# Roof top tents

5



The only **electric rooftop tent** that has a hard case and room to store your bedding inside. It comes in different sizes such 1.4m, 1.6m.

From 438.700 Ksh

<https://www.youtube.com/watch?v=fHeUG5zte6E>



The **Hardshell Compact** offers many of the same advantages as our other Hardshell tents but in a much more compact size which means it takes up less space on the roof of your vehicle. It comes in different sizes such 1.5m, 1.8m, 2.0m and 2.2m.

From 369.480 Ksh



Prices are subject to change and VAT may apply.

# Roof top tents

6



The **Moremi** rooftop tent is a good slighter cheaper option. Hard shell, light and easy to set up, this tent is only 76 Kg.

<https://www.youtube.com/watch?v=cAdvTjvphU>

@ 371.500 Ksh fitted



Another option would be the **Black Series Max Clampshell**. That is a different concept and gives you a lot of room.

<https://www.youtube.com/watch?v=ghwFmloBZZk>

@ 457.480 Ksh fitted.



Soft shell rooftop tents from **Howling Moon** offers different sizes (up to 2.4 m wide for family).

<https://www.youtube.com/watch?v=g5OMCOB5ufc&t=2s>  
Contact us for pricing.



**Howling Moon Eclipse**  
(1.4m or 1.6m)

from 285.240 Ksh fitted

<https://www.facebook.com/watch/?v=680642619273324>

Prices are subject to change  
and VAT may apply.

# Awnings and shower cubicles

7

## Alu-Cab

### Alu Cab 270 awning + brackets

@ 148.050 Ksh



For seasoned campers, an awning is very often the first accessory they bolt to their vehicle, knowing that the ability to cast as much shade as possible (in the quickest time) is crucial to overland travel. What you don't want is to be battling with poles, pegs and guy ropes in blistering midday heat, or when rain is thundering down.

This is why the popular 270° Shadow Awning from **Alucab** is designed to open, and setup, all in one. There are no additional steps or poles to pitch; you just unzip the bag and swing the awning through a full 270°. It's so easy, one person can manage it.

This wrap-around effect means that you get to enjoy 10 square meters of shelter around the full working area of your vehicle, especially where it's needed – at the rear, where your drawer system, fridge, and supplies are stored.

Without a doubt, the Alu-Cab 270° Shadow Awning is one of our proudest products.

<https://www.youtube.com/watch?v=DZj8VUOo88E>



The 180 XT MAX Awning is the ultimate solution as a **free-standing shade awning** in terms of massive shade coverage (**8.53m<sup>2</sup> / 91.82ft<sup>2</sup>**), wind resistance, with strength and durability

@ 165.950 Ksh



<https://www.youtube.com/watch?v=Kirz6Jhit8g&t=158s>

## Alu-Cab

### AluCab shower cubicle

@ 67.500 Ksh

The **Alu-Cab Shower Cube** is a modular and universal accessory, designed to interface with all existing Alu-Cab base unit platforms. The shower cube can be used as a shower or simply as a privacy cube. Being very quick to open and assemble, the shower cube is a quick change or shower just minutes away.



<https://www.youtube.com/watch?v=9IBfPSYKVbk&t=51s>

Prices are subject to change and VAT may apply.

# Awnings

8



Introducing a new awning to the Alu-Cab Shadow Awning range, the **180° Shadow Awning**. Once open this free-standing awning folds out to be parallel with your vehicle, allowing access to the rear of your vehicle, where your drawer system, fridge, and supplies are stored. There are no additional steps or poles to pitch; you just unzip the bag and swing the awning through a 180°. It's so easy, one person can manage it.

The 180° Shadow Awning is made from reflective ripstop material which assists in casting a noticeably lower-shade temperature.

@ 125.300 Ksh



## Alu-Cab



Introducing the **2m 270° Shadow Awning**, which is just a tad shorter than the standard 270° Shadow Awning, allowing for applications that needs a smaller awning to also cast shade while adventuring. It's so easy, one person can manage it.

This wrap-around effect means that you get to enjoy **6.1** square metres of shelter around the full working area of your vehicle, especially where it's needed – at the rear, where your drawer system, fridge, and supplies are stored.

@124.400 Ksh.



Prices are subject to change and VAT may apply.



# Roof top tents accessories and ladders

9



## Quick Release Tent Mount Kit - by Front Runner @ 27.500 Ksh

Do you have limited garage clearance? Maybe you just don't want to always keep the tent on your vehicle. **Front Runner's Quick Release Tent Mount Kit** gives you the freedom to mount or remove the tent in seconds, and with no tools. The 4 lockable latches give you safety and added peace of mind.



<https://www.youtube.com/watch?v=UqtCXHIDfaq>



## Spare Wheel Step- by Front Runner @ 13.450 Ksh

Strap these steps on your spare wheel. A simple, non-permanent ladder solution for accessing your vehicle's roof top.

<https://www.youtube.com/watch?v=gECzQkQ-tC0>



## Rear door ladder – by Front Runner

This strong and durable rear-mounted ladder facilitates easy access to the roof.



**[contact us for advice and pricing](#)**

**Prices are subject to change and VAT may apply.**

# Roof racks

10

Don't waste time building that DIY roof rack when **Front Runner** offers roof racks, accessories, and storage solutions for all your adventure needs. The best part? Simple installation for **almost any vehicle**.

Front Runner's roof racks, accessories and adventure gear are also made off-road tough and let you take the focus off the equipment to and onto the things that matter most on an adventure.

**Front runner's slimline II rack** is the most intelligent vehicle-based storage systems in the world. Strong, lightweight, versatile, and modular off-road rated.

Can add 50 + accessories to mount gear and toys to the top, bottom or sides of the rack.



<https://www.youtube.com/watch?v=y55qz0ppfZQ&t=32s>

**contact us for advice and pricing**



Jeep



If you don't currently need a complete Front Runner Roof Rack but still want off-road rated, durable cargo space for a bicycle, roof top tent, kayak, and other gear carrying accessories, consider a **Front Runner Load Bar Kit**. A smaller footprint, lower profile, lighter load capacity, limited accessory range, and entry level pricing distinguish Front Runner Load Bars from Front Runner Roof Racks.



[https://www.youtube.com/watch?v=X4\\_m5Nfsr-g](https://www.youtube.com/watch?v=X4_m5Nfsr-g)

# Rack accessories

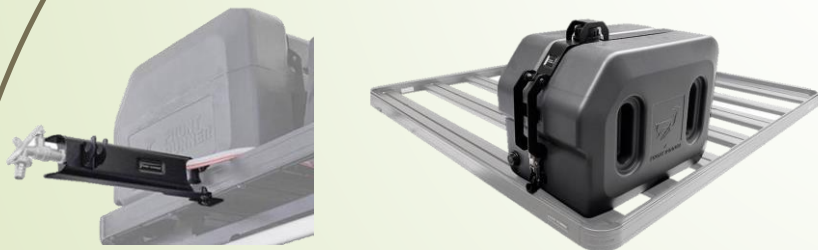
11



## 42 L water tank with tap and tap extender

This compact and sporty 42L Water Tank includes mounting brackets for the Slimline II Roof Rack. Built strong and off-road tough, the **Front Runner 42L Water Tank** is a perfect solution for water storage when space is at a premium. Extend your Water tank tap away from your vehicle to make pouring stored water effortless when out on any adventure.

@ 22.200 Ksh + 9.900 ksh



<https://www.youtube.com/watch?v=dOuVLhm2rl8>

## Under rack stainless steel table with brackets.

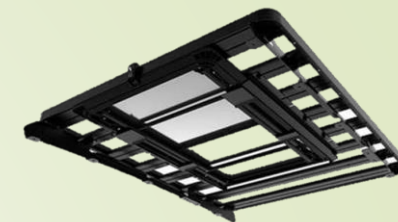
This lightweight, sturdy camp table is ideal for food preparation, food serving and gathering around to eat. Features include a stainless-steel top and black powder-coated aluminum frame. Specifically designed to be easily stored UNDERNEATH most Front Runner Roof Racks.

The Pro Stainless Steel Camp Table Kit includes the Pro Stainless Steel Camp Table, Under-Rack Table Slides and Under-Rack Table Slides Latch.

@ 56.550 Ksh



<https://www.youtube.com/watch?v=HhRC747VayE>



## Front Runner awning 2.5 M + brackets

Always have shelter from the elements with this Easy-Out Awning / 2m, which mounts to your roof rack. When expanded, this awning measures 2m wide and 2.1m out from the vehicle, making it an ideal size for all medium vehicles.

@ 62.150 Ksh



[https://www.youtube.com/watch?v=T4ZT\\_DOpZMk](https://www.youtube.com/watch?v=T4ZT_DOpZMk)

Prices are subject to change and VAT may apply.

# Rack accessories

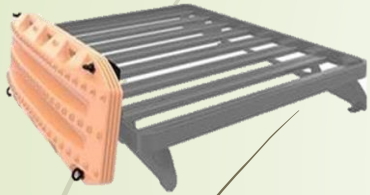
12

## Recover Device & Gear Holding Side Brackets

@ 12.500 Ksh

These off-road tough articulating brackets mount MaxTrax, TRED pro and other popular rescue devices with similar hole spacing off the side of the Front Runner Slimline II rack.

<https://www.youtube.com/watch?v=H5lkwlELP2g>



## Jerrican holder for the rack

@ 7.300 Ksh single / @ 11.350 Ksh double

This Single Jerry can holder offers a smart no rattle no wear solution. Transport much needed fuel on any adventure or the path less traveled.



<https://www.youtube.com/watch?v=-tKyNRIwMZE>

## Bicycle brackets

@ 10.600 Ksh

Fasten your bicycle's fork and back tire to the Front Runner rack or load bars with this off-road tough and adjustable bicycle mount.



<https://www.youtube.com/watch?v=sZ3J3Ls1h0o>

## Wolf Pack Pro Rack Mounting Brackets

@ 3.220 Ksh

Quickly and easily mount or remove your Wolf Pack Pros in seconds with these Wolf Pack Pro Rack Mounting Brackets. These durable brackets are made for any adventure, lockable, and offers versatile placement anywhere on your roof rack.



<https://www.youtube.com/watch?v=BTjLI2-16gs>



## Black Tie Down Rings / Eye Nuts @ 1.800 Ksh (pair)

These steel tie down rings can be used to attach just about anything to the top, sides or bottom of your Front Runner Rack. Galvanized steel, powder coated black. Sold in pairs.

[https://www.youtube.com/watch?v=M\\_QGdG1ukeg](https://www.youtube.com/watch?v=M_QGdG1ukeg)

Prices are subject to change and VAT may apply.

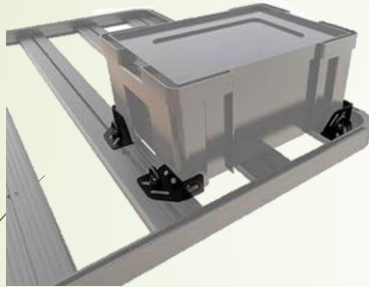
# Rack accessories

13



## Ammo boxes brackets to secure boxes on the rack

@ 5.480 Ksh



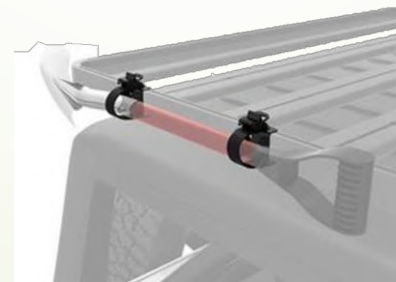
## Ratcheting Spade/Shovel & Paddle Mount

@ 4.900 Ksh

An off-road tough storage solution for spade/shovels and similar shaped gear like canoe paddles. The ratcheting straps adjust to fit various circumferences and lock tight to the sides of a Front Runner Roof Rack for rattle free, rock solid transportation. Quick release latches allow the spade/shovel or other gear to be easily removed.

<https://www.youtube.com/watch?v=CKynsGyFsPg>

Front Runner's Adjustable Rack Cargo Chocks can be used to brace and secure a variety of gear on a Front Runner Rack.

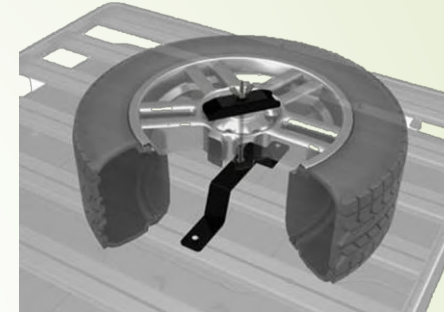


Prices are subject to change and VAT may apply.

## Spare wheel bracket mounted on the rack

@ 8.500 Ksh

An easy-to-use spare wheel mounting bracket that allows you to mount the spare wheel on your roof rack with the hub toward the sky, protecting your wheel's rim from damage and scuffing.



## Hi lift brackets to be mounted on the side of the rack

@ 9.800 Ksh

This 2-piece locking bracket easily bolts to the side of your Slimline II Roof Rack Tray for a rattle-free, off-road tough jack carrying solution. Fits all size Hi-Lift jacks.



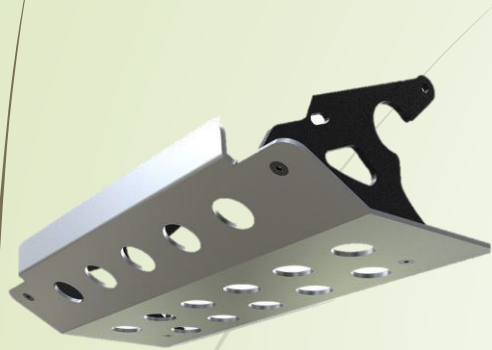
<https://www.youtube.com/watch?v=gIKKFSRu7Sg>

# Vehicle protection

14

## WHY DO YOU NEED EXTRA PROTECTION ?

Watch this video : <https://www.youtube.com/watch?v=tSQSrijqLpg4>



Bash plate



Underneath protection



Sump guard

## Gobi-X rock sliders

These trail tested rock sliders bolt to the vehicles chassis and require no drilling. Most models include Hilift jacking points used for wheel changes or recovery. The Gobi-X rock sliders are not simply rock bash protectors they also offer a strong step and protect the side of the vehicle from stones being kicked up against the side of the vehicle when overlanding.



[contact us for advice and pricing](#)

# Bull bars

15

Bull Bars are essential for the safety of you and your 4wd in highway, rural and remote-area travel, even more so when you take your 4wd off-road. Bull Bars offer by far the best form of vehicle protection against animal strikes and other collision types.



[contact us for advice and pricing](#)



# Rear bumper & wheel carrier

16



Built tough from certified steel and coated with automotive grade epoxy for durability, the **GOBI X** range bumpers keeps on giving. These bumpers give you the ability to carry one or two spare wheels (carrier mounted) or a spare and a jerry can option. This frees up space underneath the vehicle for an auxiliary fuel tank without having the OE spare position hinder your off-road capabilities.

All units are equipped as standard, with integrated hi-lift jacking points, recovery points, heavy duty tow bar and allowance for a 12V Anderson plug. Improved departure angle and superior protection over the standard towbar are also gained when fitting this product.

**contact us for advice and pricing**

<https://www.youtube.com/watch?v=lzQ7C-kXVtE>



Jeep



## ACUMAC ENGINEERING CC

Removable spare wheel carrier, fits all 4x4 and SUV with tow bars @ 87.500 Ksh



Prices are subject to change and VAT may apply.



# Storage Solutions

17

Being properly organized when gearing up for adventure is probably one of the first on the agenda before one heads-out into the bush.

Our boxes, drawers, sliders, and gullwing panels provide easy access, security, and above all, innovative space saving alternatives to traditional vehicle-based storage solutions.



Storing, organizing and moving gear in your 4x4 just got easier with this **Cub boxes lockable drawer system from Front Runner which** provides a comprehensive and practical storage solution. It can be easily fitted in your car and the (removable) boxes simplify organizing and transporting all kinds of items between your care, the campsite, garage or store.

## **Front Runner 4 Cub Box Drawer** @ 88.340 Ksh

This 4 Cub Box Drawer / Wide kit provides a comprehensive and practical storage solution for 4x4s, SUVs and crossovers that have smaller than usual cargo areas. Easily transport stored items between a vehicle and the campsite, garage, store, etc. including easy access to coolers, fridges, gear boxes and more. Engineered tough for both on and off-road conditions.



## **Front Runner 6 Cub Box Drawer w/ Cargo Sliding Top** @ 149.115 Ksh

This 6 Cub Pack Drawer with Combo Sliding Top provides a comprehensive and practical storage solution. Easily transport stored items between a vehicle and the campsite, garage, store, etc. including easy access to coolers, fridges, gear boxes and more. Sliding top makes it easy to get into those hard-to-reach places in the trunk/ load bed. Engineered tough for both on and off-road conditions.



**Prices are subject to change  
and VAT may apply.**

# Storage Solutions

18

## Alu-Cab

From **Alucab**, the **2-drawer system** easily fits in any 4X4 and gives you the ability to pack your supplies neatly in place for easy access.

What makes the drawer such a great product for a truck, is that when you need to find your gear or quickly get something its right there.

Come in different sizes and models.

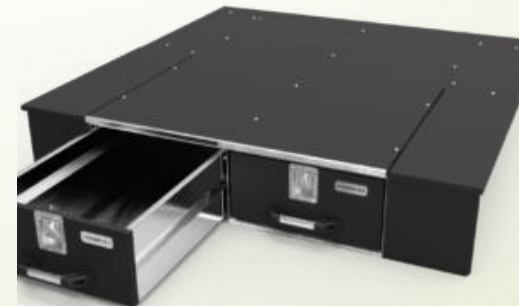


<https://www.youtube.com/watch?v=zmoY103fPho>



**Gobi-X twin drawer storage** solutions are designed to alleviate the frustration of multiple loose items floating around in the back of your vehicle.

The advantage of having an organized lockable storage system should never be underestimated.



**Big Country 4x4** also has various drawer sets

The advantage of having an organized lockable storage system should never be underestimated. It usually only takes one camping trip to wonder how you ever lived without one!

Covered in heavy duty carpet and drawer units sliding on sealed bearings; getting to your camping gear has never been easier. These units are currently available for all popular model vehicles.

**contact us for advice and pricing**

# Sliders, gullwings and roof consoles

19

Step up your adventure storage game with **the Cargo Slide**. Combine whatever your journey requires on this flat drawer, even if it's a refrigerator, chairs and storage boxes, all at once. And when the adventure is over, you can use the slide to easily access groceries and other everyday items.



<https://www.youtube.com/watch?v=hwyKPTChxa0>



[contact us for advice and pricing](#)

## 4WD INTERIORS

Roof console lets the driver take control of any situation on the road.. Being able to grab your sunnies, wallet or park pass from your overhead roof console, is the functionality you've has been missing.

Easy to install, a roof console from 4WD Interiors was awarded 4x4 Australia Magazines "Best 4x4 Aftermarket Product" for the year 2000 and pays testimony to the amount of design work, features and benefits incorporated in an

overhead roof console.



**The Big Country 4x4 gullwing** product line features aluminum locking access panels designed to replace existing vehicle specific fixed windows. Designed and built for on-road sophistication with off-road strength.



<https://www.youtube.com/watch?v=h8JX63fXq2U>

# Boxes and lashing

20



**Stratchit** – by Front Runner  
@ 4.700 Ksh

Revolutionize the way you secure loads to your vehicle. The Stratchit is the ultimate tie down with stretchy ratcheting performance in a lightweight, durable strap. These new and improved Stratchits feature a Velcro tab for strap discipline and larger stainless steel carabiners. Stratchits have all the benefits of a compact ratchet strap and bungee cord combined. Sold in pairs.



<https://www.youtube.com/watch?v=2HAMihxS1xg>

**Wolf pack pro** – by Front Runner  
@ 8.500 Ksh

The new stackable storage boxes are made from the same impact-resistant plastic, and now feature new extra-secure latching, providing extra durability while also sealing out water and dust, so your gear will stay safe, dry and clean.



<https://www.youtube.com/watch?v=JP4JyaE8zDk>

**Cargo box** – by Quickpitch @ 98.200 Ksh

The Quick Pitch Cargo box is exactly what the name says: a quick and easy lockable storage solution. This box is manufactured from aluminum with an integrated load bar on each side for easy fitment to any surface.

It can be mounted to roof racks, load bars or just about anywhere. The cargo rail on top of the box allows you to mount on top of the box as well, with dedicated slots for cargo rail clips to tighten the load on top. The dimensions are L 1165mm x W 715mm x H 360mm and the capacity 295 liters.



**Prices are subject to change and VAT may apply.**



From **Ironman**, sturdy boxes in various sizes. Come in different sizes and model from 28.500 Kshs.



**Transit Bag / Extra Large** – by Front Runner  
@ 11.650 Ksh

Free up interior space with this sturdy, flexible, lightweight and extra large roof top storage bag (180L). Ideal for clothes, camping gear, Front Runner Wolf Pack and Cub Pack storage containers, and whatever else would normally be carried in your trunk or cabin.



# Storage accessories

21



**The Wheel Cargo Mount** – by QuickPitch  
@ 33.050 Ksh

The Wheel Cargo Mount was designed to utilize the spare wheel on each and every vehicle with a rear mounted spare wheel. With the Wheel Cargo Mounts design you are now able to mount accessories to your rear mounted spare wheel. The 2 vertical load bars with M8 slots can be used to mount these accessories to the Wheel Cargo Mount. The light aluminium frame is strong enough to handle any obstacle. This bracket is fully adjustable in width and height to fit any tyre inflated or deflated, and can be used only with the top bracket excluding bottom bracket in some SUV cases.

**Prices are subject to change  
and VAT may apply.**



**The Trax-Tab** – by QuickPitch  
@ 77.280 Ksh

The Trax-Tab was developed knowing that there is a need in the industry for an easy and safe way to clamp down on your traction aids without the use of bolts, lockers or ratchet straps. This system allows you to remove and store your traction aids in 3 seconds without undoing bolts or straps.

Quick Pitch went one step further by combining the Trax secure system with a fold down preparation table. The versatility of combining two products in one is not only space saving but also easier to use. The system can be mounted on any vehicle or surface where needed.

<https://www.youtube.com/watch?v=4k0JKzVic5w>



# Refrigeration

22



The **Engel fridge** is the perfect camping fridge for leisure pursuits. Keeping your food stored at a safe temperature, having cold beers at hands reach or storing freshly caught fish until you reach the shore - this portable fridge can manage the tough African climate. The Engel Fridge Freezers have been known for their reliability, tough construction, performance and longevity.



**Engel fridge/freezer combo MT 60**  
@ 174.600Ksh



**Engel fridge/freezer combo MT 45**  
@ 132.750 Ksh

Prices are subject to change  
and VAT may apply.



The **Dometic CFX** is the most impressive portable fridge/freezer they have ever made. With six models to choose from, including the world's first powered cooler with integrated ice maker and two with dual-zone compartments, you'll have no problems finding a CFX3 to suit your needs.

<https://www.youtube.com/watch?v=wRo7prVB8I4>



**Dometic fridge/freezer CFX 50**  
@ 108.100 Ksh



**Dometic fridge/freezer CFX3 95**  
@161.100 Ksh



**Dometic fridge/freezer CFX 35**  
@ 95.700 Ksh

## NL 72 Legacy Double-Door Refrigerator & Freezer

@ 168.100 Ksh

The ultimate in versatility: The NL 72 Legacy Double-Door Refrigerator & Freezers' Double-Door design allows you to select individual bin temperatures to suit your needs. Run as a combination of fridge and freezer or set up as twin fridges or twin freezers all at different temperatures.

<https://www.nationalluna.com/product/nl-72-legacy-double-door-refrigerator-freezer/>



## NL 55 Legacy Stainless Steel Refrigerator & Freezer

@ 127.350 Ksh

National Luna's NL55 fridge/freezer gives you all the benefits of metal construction, large cooling surface, intelligent compressor control and low power draw with 60mm insulation.

<https://www.nationalluna.com/product/nl-55-legacy-stainless-steel-refrigerator-freezer/>



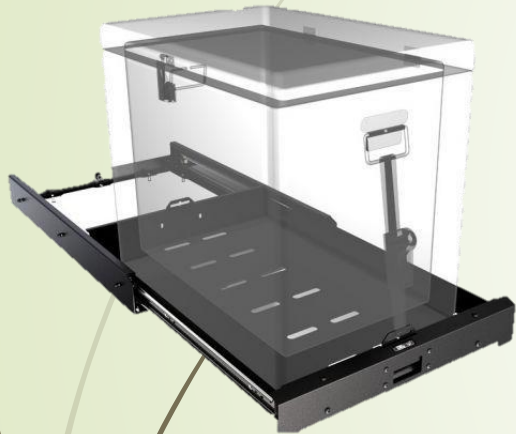
Prices are subject to change and VAT may apply.

# Fridge slides

24

No road trip is complete without a fridge and what better way to utilize your fridge than on a **fridge slide!**

Designed for ease of use, durability and secure storage, no vehicle should be without one. Built from certified steel and powder coated for durability our integrated open locking system and slide close design maximizes efficiency for those quick roadside stops.



**Fridge slide:** S, M and L from 44.600 Ksh



**Tilting fridge slide:** M- L from 47.900 Ksh

<https://www.youtube.com/watch?v=VfPRE7M94gl>

**Prices are subject to change and VAT may apply.**



Now you can fill your fridge and access it with ease. A lockable latch keeps the fridge secure and closed when the fridge slide is not in use. Drop It drop-down slides fit easily to any drawer system and working space. Supplied with tie down straps & all fixings included as standard.

<https://www.youtube.com/watch?v=54crcMT4ZVM>

**Drop down fridge slide:** M- L from 96.900 Ksh



# Auxiliary power sources

25



The portable **Lithium555 power pack** by Flexopower features high-quality Lithium Polymer batteries, MPPT solar charge controller, ultra-pure sine wave inverter and patented safety features. The AC ultra-pure sine wave output delivers continuous 500W and is suitable for sensitive electronics. The DC output runs appliances from the 5V USB and 12V Cigarette lighter adapter.

@ 78.570 Ksh



The **Delta1300** boasts the same power as traditional petrol home generators, without the fuel, noise, emissions, maintenance or weight. Portable (14kg) with 4 x AC pure sine wave 1800W total (3300W surge) and DC 6 x 5V USB fast charge & 1 x 12V CLA. Suitable for home back up, mobile power station for maintenance / building / repair.

@ 272.125 Ksh

[https://youtu.be/XWRUMKVTz\\_Y](https://youtu.be/XWRUMKVTz_Y)



**National Luna Power Pack DC25**  
@ 114.050 Ksh

It blends the convenience of a portable battery system and the performance of a DC-DC battery charger with MPPT solar regulator. This combination results in a self-contained split-charge system that is at-home in the vehicle or in camp and can be used to power fridges, lights, pumps and other 12V appliances. The Power Pack DC25 can be charged from a vehicle alternator, solar panels or external chargers making it versatile for a variety of applications.

[https://www.youtube.com/watch?v=d7e\\_5ahKd0g](https://www.youtube.com/watch?v=d7e_5ahKd0g)

Prices are subject to change and VAT may apply.

# LUMENO®

**The Battery Buddy @ 5.800 ksh**  
It used to make the most out of your Lumeno LED products and 7.2Ah battery. This plastic cap includes lugs to clip onto the spade terminals of a standard 12V 7.2Ah UPS/Alarm battery  
Battery excluded



**National Luna Battery box @ 36.825 Ksh**  
The 12V Auxiliary Battery Box is a universal box that can be customized to suit the individual's needs. Additional output ports can be added as required. This product is not a dual battery system and additional systems might be required.



<https://www.youtube.com/watch?v=RymAdjuiwpo>

# Solar Panels and accessories

26

## MOJAVE 260W GEN II FOLDABLE SOLAR PANEL

A 260W **very portable solar panel** weighing only 6.9kg! Flexopower Mojave solar cells are built with anti-micro crack design. Micro cracks develop every time a semi-flexible and portable panel is handled, resulting in output loss. Only Flexopower has a solution managing micro cracks and maintaining output. Contains no Glass, no Aluminium: no breakage and stiffness and therefore easy to fit in a fully packed vehicle.

@ 136.900 Ksh



This new high speed 30A MPPT **solar charge controller** has the latest control algorithm, minimizing the power point loss rate and can increase the energy utilization ratio of the solar system up to 30%. Suitable for lead acid- and Lithium-ion batteries. Monitor system performance and change settings from your smartphone via Bluetooth from up to 10m away. App available for iOS and Android. eBox accessory required.

@ 25.575Ksh

**flexopower**  
enerav solutions



Communication accessory to monitor system performance of your solar system, i.e. **30A MPPT solar charge controller** from the convenience of your smartphone or laptop.

<https://youtu.be/mmW2mbW30So>

The new **Tacoma-135W** @ 54.600 Ksh

This **semi-flexible solar panel** is ideal for permanent installations on trailers, RV's and vehicles. The ETFE encapsulation of the Tacoma-135 renders it mechanically tough, highly resistant to impact and tearing. The solar cells of the Tacoma-135 are Maxeon Gen III from California. A quality product from Flexopower to last decades.



## NAMIB-150 FOLDABLE SOLAR PANEL

**SUPERIOR SOLAR CELL ENCAPSULATION, CARBON FIBER FORTIFIED PET (CF-PET) FOR IMPROVED RESILIENCE AGAINST SCRATCH, IMPACT AND LONG-TERM DELAMINATION. COMPETITOR PRODUCTS IN THIS CLASS ARE REGULAR PET ONLY.**

Perfect output for long term camping or for heavy loads powering multiple appliances, including 12V camping fridge, ice maker, lights. - Portable, uncomplicated and powerful.

@ 52.050 Ksh

**Prices are subject to change and VAT may apply.**

# Batteries and battery management

27



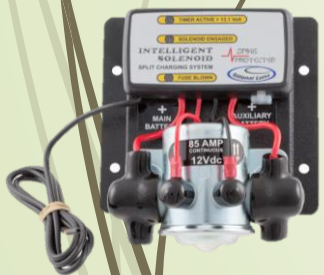
**NLDC-25**  
@ 82.170 Ksh

The NLDC-25 from National Luna is a DC to DC **battery charger and isolator** for a dual-battery system. It will charge an auxiliary or service battery from a vehicle alternator or Solar panel up to 25A output current. It also support Lithium battery.

<https://www.youtube.com/watch?v=IZP12eFyPWc&t=58s>

**National Luna Intelligent solenoid @34.900 Ksh**

It has been designed to be a compact, automatic, parallel split-charge isolator for motor vehicles. The product features intelligent control electronics and a low-loss, high-current solenoid rated for extreme environments.



**Automatic 9-32V 25A 3 Stage DC/Solar Battery Charger**  
@ 58.920 Ksh.

Allows you to charge your 12V second/auxiliary deep cycle battery on the go, simultaneously from solar and alternator (9-32V) inputs. Provides an advanced 3 stage charging process to produce a safe and comprehensive charge, a must for deep cycle batteries.

<https://www.projecta.com.au/dual-battery-charger-idc25>



**In-Vehicle DC-DC Battery Charger (R2-0)**

The DCC Pro In-Vehicle DC-DC Battery Charger was developed for the purpose of charging and maintaining any auxiliary battery in an installation where the starting battery is used as the supply source. It has been designed for use in 4WDs, RVs, buses, coaches, caravans, campers or any vehicle with a 12VDC electrical system.



@ 82.050 Ksh

<https://youtu.be/DsJjoQPexKY>

**Prices are subject to change and VAT may apply.**

**BLUE NOVA**  
energy

**Lithium Battery 108 @ 88.480 Ksh**

- \*Ultra-reliable Lithium Iron Phosphate (LiFePO4) technology
- \*Integrated battery management System(BMS)
- \*Light weight & compact
- \*Water & dust resistant (IP56)
- \*Highly durable ABS enclosure
- \*Drop-in lead acid replacement



**Discover®**  
Innovative Battery Solutions

**Discover Deep cycle battery 115 amps**  
@ 72.250 Ksh

Discover® outperforms high quality Deep Cycle Competitors in peak capacity, sustained capacity and useable life to 80% of original capacity.



**Optimate Solar 60W**  
@ 38.480 Ksh

OptiMate Solar - the worlds most efficient Solar Pulse Charger, Tester & Maintainer. Charger by day, monitor by night.



<https://www.youtube.com/watch?v=GDDcSR2sa6U>

# Batteries accessories

28

## LUMENO®



Lumeno battery indicator with voltmeter socket @ 3.930 Ksh



Strip Fuse Holder @ 1.580 Ksh



1 to 3 Car Cigarette Lighter Splitter Adapter Power Charger Port, 12V 24V. @ 2.300 Ksh



Battery Terminal Connectors with Voltmeter @ 7.095 Ksh

Anderson Power Products SB50 Connector Kit, 50 Amps @ 1.650 Ksh



29mm Panel Mount QC3.0 quick charger dual USB @ 4.750 Ksh



Professional modified **sine wave inverter**, converts 12 volt battery power into useful 230 volt AC mains power – ideal when working remotely where no mains power is available. Well suited to demanding applications, with rugged extruded metal casing, heavy duty input cables and clamps for direct connection to vehicle batteries. From 61.750 Ksh (different sizes available)



TrailBoss can multi socket @ 5.500 Ksh



12V Outlet Charger Socket Panel @ 5.450 Ksh



High output alternator

Give you the ability to **reduce the depth of a battery's discharge**—also known as cycling. That's because an oversized alternator produces more output at lower speeds, including idle. That increased output prevents the battery from having to help supply the load—and this keeps it at a more ideal state of charge.

**Contact us for pricing**



Prices are subject to change and VAT may apply.

# Recovery gear

29

## Builders tool Tire repair kit

@ 9.800 Ksh



## Soft shackles

@ 5.850 Ksh

**Soft Shackles** will help make any vehicle recovery easier. Forget about trying to find a solution to connect a steel shackle to a vehicle without recovery points. Soft Shackles wrap around anything such as recovery points, roll bars, axles and bumpers.



## Snatch strap

@ 12.500 ksh

A *snatch strap* is a valuable tool used to help in the recovery of vehicles stuck in mud or sand.



<https://www.youtube.com/watch?v=uWLBCIL8ICs>

## Spare wheel bin bag

@ 14.500 Ksh



Prices are subject to change and VAT may apply.



These advanced 4WD, lightweight and tough MAXTRAX MKII recovery devices use integrated teeth that grip into a tyre's/tire's tread to provide traction in sand, mud or snow. @ 56.200 Ksh (pair)

<https://www.youtube.com/watch?v=0FmoTFcBXB0>



## TrailBoss 600Amps booster cable

@ 8.800 ksh



# Recovery gear

30



**Hi-Lift**  
JACK CASTING

Take extra precaution against damaging your vehicle when you have to use your **Hi-Lift jack** by using this extender to fit into the vehicles jacking points @ 7.200 Ksh



The only **all-cast jack** manufactured in the world today. The jack is manufactured from high strength and tensile iron castings, the same durable metal that Hi-Lift has used for over 100

years. @ 34.100 Ksh

<https://www.youtube.com/watch?v=6dFpxDdcZqg>



Many trucks and SUV's have larger tires and/or lift kits that require extensive lifting height ability from the bumper jack. The **Lift-Mate** is designed to operate in a manner that allows the vehicle wheel to be lifted directly from the wheel, greatly reducing the amount of travel up the jack bar needed to lift the wheel in an adequate and safe height @ 8.200 Ksh

<https://www.youtube.com/watch?v=hDRKKX3nx6s>

**VIAIR**  
Your Vital Air Source

**VIAIR 450P - Automatic Function Portable Compressor @ 66.825 Ksh**

VIAIR's heavy duty portable tire inflators can be used on any vehicle with a 12v battery source and are designed for tires ranging from 33" to 42" diameter. These compressors are suitable for both on-road and off-road vehicles.



**T-MAX**  
MAXIMUM OFF ROAD RECOVERY

**NEW DESIGN**  
Hydraulic  
**JACK**

**T-MAX**  
MAXIMUM OFF ROAD RECOVERY

Powerful *hydraulic* technology. Adding a new dimension to traditional techniques, the long-travel **T-Max JACK** is backed by the unique power of hydraulic technology @ 130.500 Ksh



**Rough and Tough Compressor @ 28.600 Ksh.**

An automotive twin cylinder air compressor for inflating all kinds of items as needed.

Prices are subject to change and VAT may apply.

# Recovery gear

31

## Hydraulic Jack @ 144.500 ksh

The off-road recovery game has been revolutionized with the Hydraulic Long Travel Recovery Jack ...



<https://www.youtube.com/watch?v=oAvDhoLExaE>

## Ring Jump Starter

@ 43.250 Ksh

Perfect for a 4x4, family vehicle, boat, motorcycle, used car yard or ride-on lawnmower, the lithium powered Ring Jump Starter has plenty of power to start a 12V vehicle with engine capacity up to 5L V8 Diesel or 6L petrol.



## Tungsten Electric winch 12000 lbs @

112.565 Ksh

The Tungsten4x4 electric winch provides 12000 lb line pull rating for smooth and efficient operation, which assembly with 85 feet of 3/8 inch synthetic rope. The tungsten4x4 winch has water resistant seals and speedy line recovery. It features 3-stage planetary gear system for fast line speed, and gear ratio at 265 : 1. The Tungsten4x4 12000lbs. electric winch is equipped with 6.6 HP 12V DC series wound motor and automatic braking locks rope to prevent from spooling. The high HP motor handles business when others have long since failed....



Prices are subject to change and VAT may apply.

## Air Crane jack seconds @ 30.200 Ksh



When your vehicle is hung up on a rock, or stuck with a flat, the **Air Crane jack** is an effective, quick and simple hoist that can work in any condition.

<https://www.youtube.com/watch?v=2VpQI3b2bJg>

## Kinetic rope 9M – 13.000 Kg

@ 35.150 ksh

This rope will stretch and recoil when usage. It can stretch up to 30%.



<https://www.youtube.com/watch?v=mnlijd9Dqxs&t=62s>

## Siphon hoses

@ 4.500 ksh

The Super Easy Siphon Hose works by simply shaking up and down. Insert the fitting end into the container you are siphoning from. Aim the other end into where you are siphoning to. Then, just shake up and down until the liquid begins to flow!

<https://www.youtube.com/watch?v=IK4LQudlQkI>



# Suspension

32

[contact us for advice and pricing](#)



**Tough Dog suspension** is an industry leader in innovative and quality suspension systems for just about every 4WD application. With 35 years in business, and a combined experience of over 100 years, Every Tough Dog product is researched and developed in Australia in their Sydney based headquarters.



**Terrain Tamer**, the leader in 4x4 parts in Australia and across the globe. With a history dating back to 1969 we continue to deliver on our promise of quality, research and design to give you **4wd spares & parts** that are tested in the toughest environments.

[Parabolic leaf springs](#) are an evolution of the taper leaf spring, with the eye-catching name referring not to the shape of the spring or its leaves but to the ways the leaves within the spring are tapered from the middle – where it's thicker – to the ends – where it's thinner. This parabolic process underpins the way stress levels are managed throughout the spring, making them more efficient. Due to the way the leaves taper from end to centre, the stress is distributed more evenly across the spring and this generally leads to a much more comfortable and quieter ride, regardless of whether or not the vehicle is empty or fully loaded. Using the parabolic method, each leaf is allowed to work independently with enhanced flex without sacrificing load capacity.



# Brakes upgrade and heavy-duty clutch

33



**Powerbrake** designs and manufactures the very best brake upgrade kits on the market for 4x4 vehicles. The civilian X-Line 4x4 big brake kits feature direct technology transfer from their R-Line off road race brake systems that have been used by works race teams to win multiple FIA Cross Country World Championships as well the infamous Dakar Rally, which is regarded by many to be the most gruelling motorsport event on the planet.



Terrain Tamer's Heavy Duty Clutch Kits are designed for 4WD enthusiasts that pull that little bit extra. With a 25% increase in clamp load, additional driveline straps, extra strength damper springs, corrosion resistance and anti-burst protection, these clutches will get you through the outback & home again. Designed in Australia, made in Japan.

**contact us for advice and pricing**

Seats  
Covers



**Takla Products** has developed unique seat covers to provide coverage unlike anything else. Manufactured from exceptionally tough, 100% synthetic material, the seat covers are fully waterproof, not just water resistant and come with a lifetime guarantee – so long as the kids didn't try to cut or set fire to them!

Easy to install and maintain, they have made sure that their tough properties make for a tough seat.

Contact us for pricing as sizes and models vary.



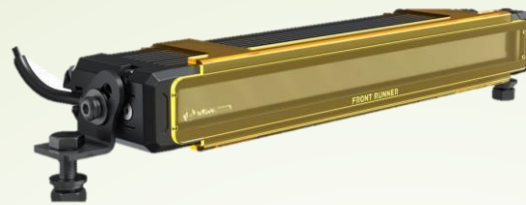
<https://www.youtube.com/watch?v=ziFjO15wZyY>



**HARD KORR®'s 9" Trailblazer BZR Series LED driving lights @ 46.500 ksh each**

With incredible light penetration, rugged aluminium housing, ultra-durable marine grade steel bracket and IP68 waterproof enclosure, the HARD KORR Trailblazer BZR Series driving lights will roll back the darkness, wherever your journey takes you.

**Prices are subject to change and VAT may apply.**



Keep your adventure going after the sun sets with this **10" LED Light Bar**. The ECE compliant high performing LED creates a strong 3000 Kelvin flood beam pattern so your trail will always be well-lit @ 14.100 Ksh



Driving in the dark? **The MX260-CB** is sure to light the way. This powerful LED offers the driver impressive near and far field illumination @ 64.750 Ksh each



**This 40 inch LED Light Bar** with spot and flood multi beam technology comes complete with a built in adjustable light shield, a Lightbar Isolator Kit and brackets to mount either below or in front of a Slimline II Roof Rack @ 117.100 Ksh



Made in Australia, the compact high-performance 75W **Lightforce Venom** LEDs boasts a massive 1 LUX @ 939m. Nothing can hold the powerful Venom LED back, and it won't hold you back, with its compact size allowing for the addition of all the accessories that you need to optimise your daily drive and epic 4WD adventures. @ 57.740 ksh each

# Canopy

35

[contact us for advice and pricing](#)

**Alu-Cab**



The **SmartCap EVOa Adventure** from **RSI** has been built for extreme on-road and off-road use. From its 5-piece modular stainless-steel design to the double-walled stainless steel Gullwing doors with interior Molle Panels for mounting your gear, this thing will take all the adventure you can throw at—and then some.



## Canopy accessories

### **Stow away table**

@ 48.500 Ksh

Stainless steel construction. Includes a mounting bracket for storing the table on the interior roof of a SmartCap.



### **Full bin**

@ 45.000 Ksh

Fills the entire side opening and provides Molle Panels to secure cargo.



### **Camp kitchen**

@ 132.500 Ksh

Camp stove, cutting board and secure storage for the included dishes, cookware, spices, etc.



Prices are subject to change and VAT may apply.

# Roof Conversion

36

## Alu-Cab

<https://www.youtube.com/watch?v=tJOJlejrzU>



<https://www.youtube.com/watch?v=MAwha2IKNkk>



[https://www.youtube.com/watch?v=s4Rxic\\_Yafc](https://www.youtube.com/watch?v=s4Rxic_Yafc)



We can't think of a more capable overland solution for three of the most capable overland vehicles. While the **Icarus conversion** kits are designed solely for **Land Rover Defender** owners, the recent **Hercules Roof Conversion** is designed to suit **Toyota Land Cruiser Troopy models** – 75 & 78 series and the **Thorr Roof Conversion** is designed to suit **Toyota Land Cruiser Station Wagon** – 76 series.

No matter which of these iconic vehicles you own, the conversion is available in kit form and once done, you'll then have access (via an internal roof opening) to your tent, your clothes, your cupboards and your kitchen – all in one supremely capable and compact package.

The roof conversion does away with having to climb up and down ladders, and also frees up packing space where you now have the option of mounting a full-size roof-rack.

[contact us for advice and pricing](#)



# Camping equipment

37



## Oztent RV – RV plus – RX Series

Contact us for pricing as sizes vary

The Oztent RV-series is the perfect tent for camping with a small group. The innovative folding frame enables this tent to be easily set up and packed down within 30 seconds, giving you extra time and headspace to enjoy the beauty of the great outdoors.

<https://www.youtube.com/watch?v=-x9ll-Ues&t=29s>



## Safari dome tents – by Campmor

Contact us for pricing as sizes vary

These dome tents from Campmor are large, rectangular structures, supported by a framework of poles. Easy to set up, big enough to stand in.

<https://www.youtube.com/watch?v=UEDCwyN34-Q>



## Howling Moon dome tents

Contact us for pricing as sizes vary



**Safari Dome, the tent that is setting the standard for all other tents.**

This has been the choice of many Safari companies around the world for over 40 years.

## Tentco dome tents

Contact us for pricing as sizes vary



# Camping equipment

38



**Pop up Double Ensuite Tent**  
@ 33.900 Ksh



**Pop up single Ensuite Tent**  
@ 18.900 Ksh

[https://www.youtube.com/watch?v=aJ\\_mCMR3wuA](https://www.youtube.com/watch?v=aJ_mCMR3wuA)

Do you love the great outdoors, but hate roughing it with dirty dishes, filthy hands and freezing cold showers? Finally, with the **Portable Propane Water Heater and Shower** from Hike Crew, you can enjoy hot, steamy water in an instant—anytime, anywhere. Our all-in-one system comes equipped with everything you need to get started and is designed for a variety of outdoor applications. Whether you're camping, hiking, hunting, fishing or backpacking, the heater packs a powerful punch, warming water quickly, safely and dependably for the entire family to enjoy.

@ 27.500 Ksh



A water system pump with built-in pressure switch that automatically starts and stops pump instantaneously when discharge valve opens and closes @ 17.500 Ksh

**Oztrail fast frame ensuite tent**  
@ 24.500 ksh



**Cadac** gaz cylinder (available in 3 and 5 kg)  
@ start from 6.500 Ksh



**Expander Camping Chair - by Front Runner**  
@ 14.500 Ksh



The **Front Runner Expander Chair's** telescopic design allows this comfortable chair to fold into an extremely compact unit which is easy to store and transport.



[https://www.youtube.com/watch?v=bYnul\\_9-no4](https://www.youtube.com/watch?v=bYnul_9-no4)



**The Desert** solid arm grey camping chair opens and closes in seconds with a smooth gliding motion and includes a carry bag for easy portability and storage.  
@ 9.990 Ksh



**Prices are subject to change and VAT may apply.**

# Camping equipment



39



**Stainless steel folding camp table – by Front Runner**  
@ 46.200 ksh

This lightweight and sturdy stainless-steel table features aluminum locking legs and is full sized for eating, food prep and serving. Can be stored UNDERNEATH most full-sized Front Runner Slimline II Roof Racks.



**Ammo Box picnic set**  
@ 18.300 ksh

Prices are subject to change and VAT may apply.



**Safire heater by Cadac @ 8.800 ksh**

This portable gas heater creates instant heat. The Safire Heater is equipped with a piezo ignition and has an incredibly efficient gas consumption. A stainless steel safety grid covers the front of the heater



<https://www.youtube.com/watch?v=hrQqvxd5oFM>

The original Road Chef now comes in a supersize. This 12V **camp oven** has 13L of cooking area capacity with two enclosed elements – one top and one bottom. Use only the top element for grilling, the bottom element for baking or both for roasting. Big Bertha comes with 2 x removable stainless steel wire racks and 1 x Road Chef Oven Baking Tray  
@ from Ksh 49.800



**Spare Tire Mount Braai/BBQ Grate - by Front Runner**  
@ 14.500 ksh



This ingenious, stainless steel cooking grate, stores over your spare wheel and takes up virtually no space.



<https://www.youtube.com/watch?v=v6Hx3yRsmYQ>

**Pop up gazebo 3m x 3m**  
@ 29.800 ksh



Keep it going whatever the weather with a pop-up gazebo. A great way to shelter your guests from the sun, or rain.

<https://www.youtube.com/watch?v=HJqD6HfjIVY>

# Camping equipment

40

**FRONT  
RUNNER**

**Camp Kitchen Utensil Set - by Front Runner**  
@ 8.500 ksh

A high-quality kitchen utensil set. Everything you need for cooking and eating can be hung at the campsite and rolls up securely for safe, rattle-free transport.



**Kampa**

Cook up a treat and save valuable space on your camping trip with **folding stainless steel kitchen equipment**.  
Contact us for pricing as sizes vary

[https://www.youtube.com/watch?v=-ATnj0\\_FzzU&t=14s](https://www.youtube.com/watch?v=-ATnj0_FzzU&t=14s)



**Prices are subject to change and VAT may apply.**



**Camping kitchen – from 61.200 ksh**

The Epic Leisure camping kitchens are made from powder coated sheet metal and has two to three drawers containing all the cooking utensils, cutlery and crockery needed to cook up a storm in the great outdoors.

The contents of the camping kitchens are stored in high density foam cutouts that ensure that the kitchens are always well organized, whilst keeping the contents from shifting and rattling during tough off-road conditions.

The kitchens contain 50-80 items, depending on which kitchen you choose, and it is perfect for 4-6 people.

<https://fb.watch/dRz6j-yD5f/?fs=e&s=cl>



**Foldable double dish rack**  
@ 12.500 Ksh

This versatile double washing up stand converts easily into a handy table.



**KingCamp**

**KingCamp foldable table @29.050 Ksh**



KingCamp lightweight portable strong stability aluminum alloy roll up a top folding table for 4-6 person is multi-purpose which is perfect to be used indoors, or bring it to outdoor activities for picnic, camping, beach, patio parties, fishing, and more! The carry bag for this table will be easy to take with the handle.

<https://www.youtube.com/watch?v=YnQZT38zxio>



# Camping equipment

41



## 2-Cook Pro Deluxe @ 18.500 ksh



The possibility of discovery is endless with the 2 Cook Pro Deluxe. This stylish gas barbecue is a lightweight unit and is the ultimate table-top companion, with two independent burners, each with piezo ignition. Don't let its size deceive you, the 2 Cook knows no limits. Comfortably catering from anywhere between 1 to 6 people, this versatile BBQ comes with two pot stands, a ceramic coated flat plate and ribbed plate.



## Cadac Handi Braai @ 9.950 ksh

The Handi Braai is a lightweight portable gas braai; Comes with 2 cooking surfaces: a chrome plated, durable, high quality wire grid and a pot stand; Includes an enameled flame tamer; Stainless steel stem



## Bushwakka spare tyre mount - @ 31.500 ksh

The ultimate way to mount your gas bottle. Create a mount to suit your setup. Fixed to the Bushwakka Spare Tyre Mount, adjust it up and down, in and out. Run it left, right or even above your spare tyre – with the Bushwakka Gas Bottle Mount, it's all up to you.

## Cadac Safari chef 2 @ 15.800 ksh

A multipurpose barbecue and grilling system, ideal for camping holidays, events, lunch in the park, or dining on the balcony. The Cadac Safari Chef 2 is a versatile, lightweight gas grill that comes with four interchangeable surfaces to suit every style of al fresco cooking. It can be used on the floor or on a table, and the device and surfaces easily fold-up and stack together so they can be stored in the handy carrying case.



Stanley adventure hammertoe **green flask and shot set** is a product grandpa wished he had. The flask and shot glass set is 18/8 stainless steel and naturally BPA-free. Flask has a wide mouth for easier filling and is leak proof. The integrated lanyard means you will not lose the cap. The shot glass set has a lid loop and is dishwasher safe.  
@ Ksh 9.500



## Cadac portable stove @ 5.800 ksh

Automatic piezo ignition • Built-in safety features; safety shut off device, safety locking device and safety joint • Cast aluminium burner & pot stand • Drip pan included • Can accommodate pots and pans of up to 26cm; Convenient carry case.

<https://www.youtube.com/watch?v=jzwBxQkv6Zc>

Prices are subject to change and VAT may apply.

# Camp Lightning

42

## The Lumeno Magnetic COB Camping Light @ 6.350 ksh.



This camping light is a 600 lumen 5w COB LED light that'll give you plenty of light around the campsite. The light has a magnet attachment, a flexible arm and 5m extension cord for easy placement and 3 lighting modes: white, amber and both.

## CAMMILE LED Camping Lantern

Battery Powered Lights Vintage Style, Rechargeable Tent Light, 5000mAh Power Bank.  
@ 14,200 ksh



## Goal Zero Lights@ 4.450 Ksh

### Light it

This collapsible solar powered lantern is a lightweight companion to any adventure with 60 lumens of usable light on high, and a 35-hour runtime on low. The Crush Light also features a soft, candle flicker mode for ambiance.

### Charge it

Just add sun and the Crush Light charges up through its built-in solar panel. In a pinch? It also charges from any USB port via micro USB cable (included).

### Crush it

The Crush Light is as easy to store as it is to use, collapsing to just over half an inch. NOTE: Crush Light ships in Demo Mode. To take it out of Demo Mode, press and hold on/off button for 10 – 15 seconds

<https://www.youtube.com/watch?v=w euOkqllMlo>



## 15 W portable rechargeable LED light with magnetic base @ 8.500 Ksh



## Solight Design's SolarPuff @ 8.300 ksh

Is a solar-powered self-inflating lantern that is durable, flexible, waterproof and can float. Made from a hybrid PET sailcloth, it is the lightest solar lantern on the market and emits a delightful dispersion of light. Available in both white and color-changing options.



## Zartek®

## The Zartek 20W led Rechargeable Worklight @ 18.700 ksh

This light is ideal for working in the dark or bringing light to the campsite. This rechargeable LED 20 watt Worklight is USB-rechargeable, shockproof and waterproof and features a rubberised casing with a foldable stand/handle.



Prices are subject to change and VAT may apply.

<https://www.youtube.com/watch?v=hE0uWeeq3nk>

# Camp Lightning

43

## Zartek®

**Zartek LED Rechargeable Spotlight**  
@ 19.300 ksh

**This spotlight** has a built-in red swivel lens to adjust light: clear or red spot beam. It has 3 modes of operation: High Beam (1hr), Medium Beam (2.5 hrs) and low beam (4 hrs). It effectively reaches 800m in beam distance



**Fireside collapsible boma**  
@ 11.900 ksh

**Various toilet stools/seats**  
As from @ 4.500 Ksh



## LUMENO®

**The Lumeno Scorpion Torch**  
@ 2.400 ksh

The torch is a compact and sturdy UV torch that's great for finding that can be used to find scorpions in the dark... a guaranteed fun activity for young and old!



## FRONT RUNNER

**LED Light Strip / 1.2M** - by Front Runner @ Ksh 9.900

Light up your next adventure with this ultra-flexible, versatile LED 1.2m (47.2") LED light strip that provides an abundance of natural white light. Attaches nearly anywhere to illuminate your campsite, tent or awning, dimmable to the required intensity or mood.



**Prices are subject to change and VAT may apply.**

# Water tanks and accessories

44

**Plastic water with tap**  
@ 7.250 ksh

An all-plastic food grade water tank that fits into the Front Runner line of Jerry Can holders as well as other popular Jerry Can holders. It is similar in size and shape to most jerry cans on the market.



**50L Pioneer plastics cooler box**  
@ 28.150 ksh

Strong and durable, Pioneer plastics cooler boxes with carry handles are ideal for a range of consumables both commercially and domestically.



Want more water pressure in your camping shower than gravity allows? No power supply for electric pumps? Then the **OZtrail Explorer Camping Portable Pressure Shower** is for you  
@ 8.450 Ksh



**Heavy duty water carrier 10 L**  
@ 5.650 ksh

Never waste a drop of water again. Pick the size ideal for you (5, 10, or 15 litres) and use the inclusive tap to immediately manage the water flow, it's perfect for those one cup kettle fills. When finished, unscrew the removable tap and replace with the standard lid to create a water-tight seal for transport!!



**Water tank**

Contact us for pricing as sizes vary



**Prices are subject to change and VAT may apply.**



**Front Runner Shower cubicle**  
@ 18.950 ksh

Every adventure needs some private moments. Create a private shower cubicle, change room or ablution room from your roof rack.



<https://www.youtube.com/watch?v=BH7B40QG7zc>

# Adventures

45

## FLUID KAYAKS

Fluid has a range of kayaks to suit a variety of needs. This range is split between recreational, whitewater, and competition. All kayaks are roto-molded plastic and are hardy and long-lasting.



<https://www.youtube.com/watch?v=LjuswKQOovs>



It takes one person just 15 minutes to assemble the SEAL. Designed and built in solid ARK tradition, it is a tough, highly buoyant inflatable, with a choice of either a 12-mm marine ply floor or air floor. Both floor options provide a rigid platform for fishing and transporting. Fitted with an inflatable keel, the hull forms a V shape enhancing the tracking and offering a smoother ride. The SEAL comes fitted with oars, oarlocks, self-draining bailers and a 32-mm marine ply transom that accommodates a 5 to 15-hp engine.

The beauty of the inflatable is not lost on this rigid boat. It can be packed and stowed into your car boot or yacht locker with surprising ease.



The XRAMP allows you to load and haul your motorcycle quickly and easily! It features the capability to carry all bikes from off-road, superbikes adventures and cruisers. The easy-to-adjust XRAMP is constructed with a steel platform and ramp powder-coated finish that can be used to load your motorcycle. Carrier is made with durable, SABS long lasting steel tubing construction with powder coat finish and comes with a 12 months warranty. From 57.900 ksh

[https://www.youtube.com/watch?v=f60jrG9\\_Z4k](https://www.youtube.com/watch?v=f60jrG9_Z4k)

**contact us for advice and pricing**



The CROC's unique standard closed-cell foam floor provides rigidity, buoyancy and protection. Its flat profile glides easily over the water and it boasts a rapid self bailing floor system for the big water. This versatile craft is at home cruising placid riverways, wave-surfing on the ocean or running up to grade 5 rivers.

<https://www.youtube.com/watch?v=esCt1lc91Qg>



If you have any question, idea or inquiry, please feel free to give me a call on 0722 393 159.

With thanks,

Vincent.

